



**12^h ANNUAL HOME OF THE “JOHN”
BULLS**

**BULL AND FEMALE SALE
SATURDAY, MARCH 5, 2016
VIKING AUCTION MARKET**



Stella & Bruno hand painted by kids at Canadian Bull Congress 2016



**Welcome to Our 12th Annual
Bull & Female Sale
March 5, 2016, 1:30 p.m.
Viking Auction Market Ltd.
Corner of Highway 26 & 36**

Welcome to the Chomiak Charolais Bull and Female Sale.

Our family entered the Charolais business in 1990; and prior to that we ran Charolais bulls in our commercial herd. Our program has always been the pursuit of excellence. Over the years we enhanced our cow herd with improved genetic traits. This cross pollination activity has created an impressive female herd of 100 plus. As well to enhance our herd quality, our culling is hard.

Our herd sires are always selected keeping in mind the alliance which we are constantly developing with the cattle folk to ensure that we are able to provide that functional bull along with calving ease. We scout out our sires to ensure that we are introducing strong traits to continually improve the herd. Our herd sires over the years were either direct champions or sons of champions. Our Full French sires introduce that trait, especially the muscle trait, into our purebred program.

We are certainly privileged to have the opportunity to present another set of the “right kind” of bulls and we are delighted to be able to offer these to you in our pursuit of excellence. Our breeding bulls are bred to grow and perform, bred to calve, bred to breed, and bred to be good doin’, good old boys! Remember, size matters, because we all sell our calves by the pound! Our challenge is to offer a bull to suit your needs and bring out the best in your cows. The amount of cash in the pocket when the calves hit the market is a major factor when choosing a bull. Pounds equal dollars.

We want to thank our past buyers for their business and look forward to extending our buyer base.

Our hospitality is always engaged and we welcome visitors. We extend a warm welcome to all, to join us for lunch and refreshments, commencing at 11:30 a.m., with guest speaker, Ian Giebelhaus, DVM, BScAg, of the Rimbey Veterinary Clinic, to follow. The sale will begin at 1:30 p.m. Upon completion of this sale, please join the Chomiak family for further hospitality.

We appreciate your participation today and thank you for coming. Thanks a million.

John, Cathie, Christine,
Darlene, Ed, Josh, Kinch
Karen, Taylor
The Chomiak Family

Purchasers of Chomiak Stock Could Win...

- Weekend trip to Las Vegas (value \$800.00)
- Weekend at West Edmonton Mall (approx. value \$400.00)
- One Roll of Cover Edge Bale Mesh – donated by Deerland Equipment, Vegreville
- Chateau Lacombe Revolving Restaurant Dinner Certificate (\$100 value)
- Two Edmonton Eskimo Football Tickets
- Two Vests & Ring Toss Game—donated by Rocky Mountain Equipment, Vegreville

Sale Day:

Cliff Grinde – 780-336-6333
Viking Auction Market Ltd.

John Chomiak – cell - 780-945-1504

Blockperson – Christine Chomiak

Viking Auction Market Ltd. – 780-336-2209
Corner of Highways 26 and 36

Guest Speaker

Ian Giebelhaus DVM BScAg, Rimbey Veterinary Clinic, will be giving a presentation talking about BSE, BSE testing, an update on the last case found, and potential trade implications of us not meeting our BSE testing targets.



LOT 1 JOHN FERNANDO 2B HORNED MALE
JOHN 2B (LE) MC359784 FEB 4, 2014

STUTHEITS SONNY 603S ROLLIN ACRES RALLY 33M
SIRE: PMC317908 PRO-CHAR MONGO 57U JES JANINE 41J
SOS MAE 53L HTA WHITEHOT 105A
P-3 MS UNLTD POLL 8-109H
HTA CROWN PRINCE 152L ERIXON'S 1ST CHOICE 209H
DAM: PFC377056 JOHN GOLDIE 7W HTA HOT STUFF 803H
JOHN SNOWFLAKE 1P HFCC PLD BOND 19L
JDF FOUR XECRETS 5L



BW 102 lbs

LOT 2 JOHN FIRE POWER 3B POLLED MALE
JOHN 3B (LE) PMC359785 FEB 11, 2014

STUTHEITS SONNY 603S ROLLIN ACRES RALLY 33M
SIRE: PMC317908 PRO-CHAR MONGO 57U JES JANINE 41J
SOS MAE 53L HTA WHITEHOT 105A
P-3 MS UNLTD POLL 8-109H
DBAR SURVIVOR 220M DBAR BAXTER 4K
DAM: PFC371451 NCLP HOW'S THIS 846U KALA'S FROSTY 121H
DBAR MISS PRISS 506R SVY FREEDOM PLD 307N
MOORMAID HANK 910J



BW 103 lbs

LOT 3 JOHN ADONIS 5B POLLED MALE
JOHN 5B (LE) PMC359786 FEB 13, 2014

STUTHEITS SONNY 603S ROLLIN ACRES RALLY 33M
SIRE: PMC317908 PRO-CHAR MONGO 57U JES JANINE 41J
SOS MAE 53L HTA WHITEHOT 105A
P-3 MS UNLTD POLL 8-109H
HTA CROWN PRINCE 152L ERIXON'S 1ST CHOICE 209H
DAM: PFC371612 JOHN RONA 48U HTA HOT STUFF 803H
EXL LARKIN 178L E-CEE KATMANDU 200B
EXL FORGETMENOT 675F



BW 103 lbs

LOT 4 JOHN GODZILLA 8B POLLED MALE
JOHN 8B (LE) PMC359787 FEB 17, 2014

STUTHEITS SONNY 603S ROLLIN ACRES RALLY 33M
SIRE: PMC317908 PRO-CHAR MONGO 57U JES JANINE 41J
SOS MAE 53L HTA WHITEHOT 105A
P-3 MS UNLTD POLL 8-109H
KCM TEREX 333N HFCC PLD EVOLUTION 5L
DAM: PFC362282 JOHN DANCER 26T EVC MISS ANASTASIA 92B
SOS FASTTRACK 117N CHARDEL TURBO 964J
MBK MS FAST TRACK 704G



BW 110 lbs

LOT 5 JOHN STASHKO 12B POLLED MALE (TWIN)
JOHN 12B (LE) (PUREBRED NOT REGISTERED) FEB 21, 2014

STUTHEITS SONNY 603S ROLLIN ACRES RALLY 33M
SIRE: **PMC317908 PRO-CHAR MONGO 57U** JES JANINE 41J
SOS MAE 53L HTA WHITEHOT 105A
P-3 MS UNLTD POLL 8-109H

DAM: JOHN 6X (PUREBRED NOT REGISTERED)

BW 89 lbs



LOT 6 JOHN VULCAN 17B POLLED MALE
JOHN 17B (LE) PMC359788 FEB 26, 2014

VALUE ON VALUE 7117 EATONS VALUE BEYOND 3004
SIRE: **PMC338259 EATONS BEYOND VALUE 00209** EATONS SIOUX 3934
EATONS FAUSTI 6775 EATONS HERITAGE 2016
EATONS FAUSTI 0784

LT WYOMING WIND 4020 PLD SCHURRTOP 5627
DAM: **PFC336958 JOHN SNOWBALL 1N** LT CHAP'S LADY 2170P
JDF FOUR SECRETS 5L KC STOLICHNAYA H016 ET
JDF ELLYMAE 6H

BW 102 lbs



LOT 7 JOHN STEELY 19B POLLED FULL FRENCH MALE
JOHN 19B (LE) PFMC9036 FEB 26, 2014

MARTEL INCOGNITO
SIRE: **PFMC8782 MAPLE LEAF POL MARTEL 201Z** GALANTE
MAPLE LEAF MS PALADIN 850U MAPLE LEAF PALADIN 421P
MLR MISS ECRIN 91K

JR UFANO CW MARTEL 707T UFANO SC
DAM: **PFFC14334 JR MISS UFANO MARTEL 916W** JR C.W. MARTEL POLL 406P
JR MISS PAL BAR7 735T MAPLE LEAF PALADIN 471P
BAR 7 EASY RANA 29R

BW 102 lbs



LOT 8 JOHN ROCKET 23B POLLED MALE
JOHN 23B (LE) PMC359789 MAR 1, 2014

UFANO SC ROOSVELT
SIRE: **PFMC8095 JR UFANO CW MARTEL 707T** ROSIE
JR CW MARTEL POLL 406P CURTIS WALLACE 141H
MLC MISS MAPLE LEAF

2 UP PEUGEOT ET 2UP LIMITED EDITION 147
DAM: **PFC366619 JOHN SARAH 30T** PALGROVE ESTELLA 14
EXL HARLEQUIN 825H E-CEE KATMANDU 200B
EXL MISS BEAUTY 43D

BW 102 lbs



LOT 9 JOHN VORTEX 25B POLLED FULL FRENCH MALE
 JOHN 25B (LE) PPMC 9037 MAR 2, 2014

MARTEL INCOGNITO
 GALANTE
SIRE: PPMC8782 MAPLE LEAF POL MARTEL 201Z
 MAPLE LEAF MS PALADIN 850U MAPLE LEAF PALADIN 421P
 MLR MISS ECRIN 91K

JR UFANO CW MARTEL 707T UFANO SC
DAM: PPMC14731 JOHN SABRINA 33Y JR C.W. MARTEL POLL 406P
 MBZF ZOEY 6T PCFL SOLITAIRE 55N
 MBZF FAYE 4L

BW 108 lbs



LOT 10 JOHN ATOMIC 27B POLLED MALE
 JOHN 27B (LE) PMC359790 MAR 6, 2014

UFANO SC ROOSVELT
 ROSIE
SIRE: PPMC8095 JR UFANO CW MARTEL 707T
 JR CW MARTEL POLL 406P CURTIS WALLACE 141H
 MLC MISS MAPLE LEAF

MVX COUGARHILL HANK 720G RAINBOW MR CYRANO 32D
DAM: PFC347387 JOHN HARMONY 9R MVX EDITH 806X
 HUB EXTRODINAIRE 21J HUB LONGSHANKS 17G
 HUB EXTRODINAIRE 55F

BW 95 lbs



LOT 11 JOHN VERSACE 28B HORNED MALE
 JOHN 28B (LE) MC359791 MAR 9, 2014

UFANO SC ROOSVELT
 ROSIE
SIRE: PPMC8095 JR UFANO CW MARTEL 707T
 JR CW MARTEL POLL 406P CURTIS WALLACE 141H
 MLC MISS MAPLE LEAF

WILDOR RAVEN 6M WILDOR FREEWAY 10K
DAM: EFC379157 NCLB LADY RAVEN 935W WILDOR LADY 58J
 DBAR MYSTIC 239M GERRARD KINKO 36K
 LLW INTREPID PLD 300J

BW 110 lbs



LOT 12 JOHN ROONEY 29B POLLED MALE
 JOHN 29B (LE) PMC359792 MAR 10, 2014

MARTEL INCOGNITO
 GALANTE
SIRE: PPMC8782 MAPLE LEAF POL MARTEL 201Z
 MAPLE LEAF MS PALADIN 850U MAPLE LEAF PALADIN 421P
 MLR MISS ECRIN 91K

JR UFANO CW MARTEL 707T UFANO SC
DAM: PFC389759 JOHN DAPHNE 52Y JR C.W. MARTEL POLL 406P
 POG PRINCES 21P WILLOWVALE PROJECTOR 90C
 POG LUCKY LADY 70D

BW 96 lbs



LOT 13 JOHN ANTON 30B POLLED MALE
 JOHN 30B (LE) PMC359793 MAR 11, 2014

SIRE: STUTHEITS SONNY 603S
 SOS MAE 53L

ROLLIN ACRES RALLY 33M
 JES JANINE 41J

DAM: KCM TEREX 333N
 PFC353580 JOHN ROSEBUD 12S
 CIRCLE CEE WHISPER 134L

HTA WHITEHOT 105A
 P-3 MS UNLTD POLL 8-109H

HFCC PLD EVOLUTION 5L
 EVC MISS ANASTASIA 92B

SOS JAMBUSTER PLD 914J
 FIRST CHOICE DEBBIE 3H

BW 95 lbs



LOT 14 JOHN TITAN 33B POLLED MALE
 JOHN 33B (LE) PMC359848 MAR 18, 2014

SIRE: JOHN CANON 20T
 PMC338986 JOHN SHOTGUN 49X
 UBM MISS SOXY 4S

RGF REAL ESTATE 129R
 SDC MISS CORINA 24J

DAM: PCFL SOLITAIRE 55N
 FFC13942 MBZF ZOEY 6T
 MBZF FAYE 4L

LEN MR MAC 69M
 UBM MISS LADY 29L

PCFLMAXIMILIAN 106G
 PCFL JUBILEE 77D

FIVECO
 MBZF IRINE 1H

BW 102 lbs



LOT 15 JOHN KNOCKOUT 34B POLLED MALE (TWIN)
 JOHN 34B (LE) PMC360122 MAR 18, 2014

SIRE: VALUE ON VALUE 7117
 PMC338259 EATONS BEYOND VALUE 00209
 EATONS FAUSTI 6775

EATONS VALUE BEYOND 3004
 EATONS SIOUX 3934

DAM: KCM TEREX 333N
 PFC353577 JOHN SHOWGIRL 4S
 JOHN PANSY 3H

EATONS HERITAGE 2016
 EATONS FAUSTI 0784

HFCC PLD EVOLUTION 5L
 EVC MISS ANASTASIA 92B

SILVERON GOODYEAR ET 8D
 ZDM BEA 26C

BW 88 lbs



LOT 16 JOHN HOMBRE 35B HORNED MALE
 JOHN 35B (LE) MC359794 MAR 21, 2014

SIRE: VALUE ON VALUE 7117
 PMC338259 EATONS BEYOND VALUE 00209
 EATONS FAUSTI 6775

EATONS VALUE BEYOND 3004
 EATONS SIOUX 3934

DAM: EXL TRADE SECRET 154L
 FC353130 JOHN HEIRLOOM 50S
 EXL MALLORIE 227M

EATONS HERITAGE 2016
 EATONS FAUSTI 0784

SFL JADE 26J
 EXL GOLDEN GIRL 745G

SPARROWS ALLIANCE 513G
 EXL KISS ME QUICK 78K

BW 98 lbs



LOT 17 JOHN DIESEL 36B POLLED MALE (RED FACTOR)
 JOHN 36B (LE) QPMC359795 MAR 22, 2014

JOHN CANON 20T RGP REAL ESTATE 129R
 SDC MISS CORINA 24J

SIRE: PMC338986 JOHN SHOTGUN 49X
 UBM MISS SOXY 4S LEN MR MAC 69M
 UBM MISS LADY 29L

LDH CHRISPIN 5P
 GGRR RED THUNDER 10S GGRR RED MS PEPPER 17N

DAM: QPFC377209 JOHN TABBY 79W
 JOHN NICOLE 72T SVY FREEDOM PLD 307N
 NR MISS RIO 8R



BW 88 lbs

LOT 18 JOHN MAGNUM 37B POLLED MALE
 JOHN 37B (LE) PMC359796 MAR 23, 2014

JOHN CANON 20T RGP REAL ESTATE 129R
 SDC MISS CORINA 24J

SIRE: PMC338986 JOHN SHOTGUN 49X
 UBM MISS SOXY 4S LEN MR MAC 69M
 UBM MISS LADY 29L

SFL JADE 26J
 EXL TRADE SECRET 154L EXL GOLDEN GIRL 745G

DAM: PFC366615 JOHN MISS TAYLOR 10T
 JIL SYMPHONY 25G WCR SIR DUKE 9928
 JIL SENSATION 8E



BW 100 lbs

LOT 19 JOHN TERMINATOR 39B POLLED MALE
 JOHN 39B (LE) PMC359797 MAR 23, 2014

STUTHEITS SONNY 603S ROLLIN ACRES RALLY 33M
 JES JANINE 41J

SIRE: PMC317908 PRO-CHAR MONGO 57U
 SOS MAE 53L HTA WHITEHOT 105A
 P-3 MS UNLTD POLL 8-109H

SPARROWS ALLIANCE 513G
 HFCC PLD BOND 19L HFCC ELVIRA 36C

DAM: PFC362272 JOHN JANNA 37T
 CIRCLE CEE WHISPER 134L SOS JAMBUSTER PLD 914J
 FIRST CHOICE DEBBIE 3H



BW 95 lbs

LOT 20 JOHN HOTROD 45B POLLED MALE
 JOHN 45B (LE) PMC359798 MAR 31, 2014

VALUE ON VALUE 7117 EATONS VALUE BEYOND 3004
 EATONS SIOUX 3934

SIRE: PMC338259 EATONS BEYOND VALUE 00209
 EATONS FAUSTI 6775 EATONS HERITAGE 2016
 EATONS FAUSTI 0784

HFCC PLD EVOLUTION 5L
 KCM TEREX 333N EVC MISS ANASTASIA 92B

DAM: PFC384046 JOHN CRYSTAL 46X
 STAUFFERS MISS GINGER 17P SPARROWS COSSACK 11L
 STAUFFERS GINGER 31M



BW 108 lbs

LOT 21 JOHN MAXIMUS 48B HORNED MALE
 JOHN 48B (LE) MC359799 APR 1, 2014

SIRE: **PMC338259 EATONS BEYOND VALUE 00209**
 VALUE ON VALUE 7117 EATONS VALUE BEYOND 3004
 EATONS SIOUX 3934
 EATONS FAUSTI 6775 EATONS HERITAGE 2016
 EATONS FAUSTI 0784

DAM: **PFC370538 JOHN SWEETIE 8U**
 KCM TEREK 333N HFCC PLD EVOLUTION 5L
 JOHN MIYA 33N EVC MISS ANASTASIA 92B
 CIRCLE CEE FORCE 40K
 JOHN MISS KAREN 12K

BW 95 lbs



LOT 22 JOHN EPIC 49B POLLED MALE
 JOHN 49B (LE) PMC359800 APR 2, 2014

SIRE: **PMC338259 EATONS BEYOND VALUE 00209**
 VALUE ON VALUE 7117 EATONS VALUE BEYOND 3004
 EATONS SIOUX 3934
 EATONS FAUSTI 6775 EATONS HERITAGE 2016
 EATONS FAUSTI 0784

DAM: **PFC362284 JOHN SAVANAH 71T**
 EC NO DOUBT 2022P M6 GRIDMAKER 104 PET
 JOHN SAVANAH 71T EC LADY DUKE 2022P
 KCM JACKIE 503R LT RIO BLANCO 1234P
 KCM JACKPOT 338N

BW 94 lbs



LOT 23 JOHN DYNAMITE 50B POLLED MALE
 JOHN 50B (LE) PMC359801 APR 2, 2014

SIRE: **PMC317908 PRO-CHAR MONGO 57U**
 STUTHEITS SONNY 603S ROLLIN ACRES RALLY 33M
 JES JANINE 41J
 SOS MAE 53L HTA WHITEHOT 105A
 P-3 MS UNLTD POLL 8-109H

DAM: **PFC363989 JIL SOPHIA 6T**
 SCR MR MAGIC 640 RDW SIR MAGIC A647P
 JIL SOPHIA 6T RCR MS ALUMIGATOR Y683
 BJK BUCKAROO 836H
 JIL LUCY 72N

BW 101 lbs



LOT 24 JOHN ALFIE 52B POLLED MALE
 JOHN 52B (LE) PMC359802 APR 6, 2014

SIRE: **PMC338986 JOHN SHOTGUN 49X**
 JOHN CANON 20T RGP REAL ESTATE 129R
 SDC MISS CORINA 24J
 UBM MISS SOXY 4S LEN MR MAC 69M
 UBM MISS LADY 29L

DAM: **FFC13954 JR MS CW GOVERNOR 709T**
 CURTIS WALLACE 141H PBT SIR TILL URANUS 68E
 HONEY HEART MISS KAT 42B
 JR MISS INTER YOYO 313N SIR INTERNATIONAL 27H
 LWR MISS LEE YOYO 4Y

BW 102 lbs



LOT 25 JOHN TRACTION 53B POLLED MALE
JOHN 53B (LE) PMC359803 APR 8, 2014

JOHN CANON 20T
SIRE: PMC338986 JOHN SHOTGUN 49X
UBM MISS SOXY 4S

KCM TEREX 333N
DAM: PFC353555 JOHN MINI 13R
PRAIRIE COVE MISS 58K

BW 108 lbs

RGP REAL ESTATE 129R
SDC MISS CORINA 24J

LEN MR MAC 69M
UBM MISS LADY 29L

HFCC PLD EVOLUTION 5L
EVC MISS ANASTASIA 92B

GERRARD PAPA SMURF 17F
PRAIRIE COVE MISS 114A



LOT 26 JOHN ORLANDO 55B POLLED MALE
JOHN 55B (LE) PMC359804 APR 9, 2014

STUTHEITS SONNY 603S
SIRE: PMC317908 PRO-CHAR MONGO 57U
SOS MAE 53L

STAUFFERS HAZZARD 59R
DAM: PFC384049 JOHN DUSTY 66X
JOHN BEAUTY 17T

BW 105 lbs

ROLLIN ACRES RALLY 33M
JES JANINE 41J

HTA WHITEHOT 105A
P-3 MS UNLTD POLL 8-109H

SPARROWS COSSACK 11L
SFL 016 MISS GRACE 1K

KCM TEREX 333N
JOHN WEEPING BELL 17M



LOT 27 JOHN MIDAS 56B (NOT REGISTERED) POLLED MALE
JOHN 56B (LE) APR 13, 2014

JOHN CANON 20T
SIRE: PMC338986 JOHN SHOTGUN 49X
UBM MISS SOXY 4S

KCM TEREX 333N
DAM: JOHN 58T

BW 95 lbs

RGP REAL ESTATE 129R
SDC MISS CORINA 24J

LEN MR MAC 69M
UBM MISS LADY 29L

HFCC PLD EVOLUTION 5L
EVC MISS ANASTASIA 92B



LOT 28 JOHN MEMPHIS 57B POLLED MALE
JOHN 57B (LE) PMC359805 APR 26, 2014

STUTHEITS SONNY 603S
SIRE: PMC317908 PRO-CHAR MONGO 57U
SOS MAE 53L

JR CADET'S IMAGE 402P
DAM: FFC14258 JR MISS CADET 837U
JR MISS MAGNUM 417P

BW 92 lbs

ROLLIN ACRES RALLY 33M
JES JANINE 41J

HTA WHITEHOT 105A
P-3 MS UNLTD POLL 8-109H

CADET- ROUSEL
MLC MISS MAPLE LEAF

PCFL MAXIMILIAN 106G
PCFL PERFECT 50K



LOT 29 **JOHN ELVARADO 61B** **POLLED MALE**
JOHN 61B (LE) PMC359806 MAY 11, 2014

JOHN CANON 20T
SIRE: PMC338986 JOHN SHOTGUN 49X
UBM MISS SOXY 4S

RGP REAL ESTATE 129R
SDC MISS CORINA 24J

LEN MR MAC 69M
UBM MISS LADY 29L

LT RIO BLANCO 1234P
DAM: PFC346686 NR MISS RIO 8R
NR STAR 9N

WCR PRIME CUT 764 PLD
LT PRAIRIE MAID 4054

BALDRIDGE FASTTRACK 82F
NR SAPHIRE 20D

BW 92 lbs



LOT 30 **JOHN PEGASUS 65B** **POLLED MALE**
JOHN 65B (LE) PMC359807 JUNE 15, 2014

VALUE ON VALUE 7117
SIRE: PMC338259 EATONS BEYOND VALUE 00209
EATONS FAUSTI 6775

EATONS VALUE BEYOND 3004
EATONS SIOUX 3934
EATONS HERITAGE 2016
EATONS FAUSTI 0784

SVY FREEDOM PLD 307N
DAM: PFC362283 JOHN NICOLE 72T
NR MISS RIO 8R

HFCC PLD EVOLUTION 5L
SVY PURRFECT 184L

LT RIO BLANCO 1234P
NR STAR 9N

BW 98 lbs



CHOMIAK CHAROLAIS FEMALES

LOT 31 **JOHN VANESSA 62A** **POLLED FEMALE (TWIN)**
JOHN 62A (LE) PFC403084 MAY 9, 2013

STUTHEITS SONNY 603S
SIRE: PMC317908 PRO-CHAR MONGO 57U
SOS MAE 53L

ROLLIN ACRES RALLY 33M
JES JANINE 41J

HTA WHITEHOT 105A
P-3 MS UNLTD POLL 8-109H

MERIT 5133E
DAM: PFC307746 JOHN SHADY LADY 1L
SDC MISS CORINA 24J

HTA WHITEHOT 105A
WHITE CAP BECKY 8B

2UP PEUGEOT ET
EXL GLORY 731G

Exposed to SOUTHSIDE UNO 29A May 15 to October 31, 2015

LOT 32 JOHN RENEE 46A POLLED FEMALE
JOHN 46A (LE) (NOT REGISTERED) MAR 14, 2013

JOHN CANON 20T RGP REAL ESTATE 129R
SIRE: PMC338986 JOHN SHOTGUN 49X SDC MISS CORINA 24J
UBM MISS SOXY 4S LEN MR MAC 69M
UBM MISS LADY 29L

JR UFANO CW MARTEL 707T UFANO SC
DAM: JOHN 23Y (NOT REGISTERED) JR C.W. MARTEL POLL 406P

Exposed to SOUTHSIDE UNO 29A May 15 to October 31, 2015

LOT 33 JOHN MANDY 40A POLLED FEMALE
JOHN 40A (LE) PFC403075 FEB 24, 2013

JOHN CANON 20T RGP REAL ESTATE 129R
SIRE: PMC338986 JOHN SHOTGUN 49X SDC MISS CORINA 24J
UBM MISS SOXY 4S LEN MR MAC 69M
UBM MISS LADY 29L

STAUFFERS HAZZARD 59R SPARROWS COSSACK 11L
DAM: PFC384054 JOHN STARLING 83X SFL 016 MISS GRACE 1K
JOHN MAGGIE 21M HOPE LUCKY LAD 911J
ZDM MS CHAPS 28C

Exposed to SOUTHSIDE UNO 29A May 15 to October 31, 2015

LOT 34 JOHN TASHA 58A POLLED FEMALE
JOHN 58A (LE) PFC403082 APR 21, 2013

JOHN CANON 20T RGP REAL ESTATE 129R
SIRE: PMC338986 JOHN SHOTGUN 49X SDC MISS CORINA 24J
UBM MISS SOXY 4S LEN MR MAC 69M
UBM MISS LADY 29L

STAUFFERS HAZZARD 59R SPARROWS COSSACK 11L
DAM: PFC377069 JOHN ROBYN 29W SFL 016 MISS GRACE 1K
JOHN ROSEBUD 12S KCM TEREX 333N
CIRCLE CEE WHISPER 134L

Exposed to SOUTHSIDE UNO 29A May 15 to October 31, 2015

LOT 35 JOHN ARIEL 31A POLLED FEMALE
JOHN 31A (LE) PUREBRED NOT REGISTERED FEB 16 2013

UFANO SC ROOSVELT
SIRE: **PFMC8095 JR UFANO CW MARTEL 707T** ROSIE
JR CW MARTEL POLL 406P CURTIS WALLACE 141H
MLC MISS MAPLE LEAF
CURTIS WALLACE 141H PBT SIR TILL URANUS 68E
DAM: **FFC13954 JR MS CW GOVERNOR 709T** HONEY HEART MISS KAT 42B
JR MISS INTER YOYO 313N SIR INTERNATIONAL 27H
LWR MISS LEE YOYO 4Y

Exposed to SOUTHSIDE UNO 29A May 15 to October 31, 2015

LOT 36 JOHN CANADA 15B POLLED FEMALE
JOHN 15B (LE) PFC410730 FEB 23, 2014

STUTHEITS SONNY 603S ROLLIN ACRES RALLY 33M
SIRE: **PMC317908 PRO-CHAR MONGO 57U** JES JANINE 41J
SOS MAE 53L HTA WHITEHOT 105A
P-3 MS UNLTD POLL 8-109H
DBAR SURVIVOR 220M DBAR BAXTER 4K
DAM: **PFC382110 JOHN BLUE MOON 1X** KALA'S FROSTY 121H
LAE TRANQUILITY 743T HTA MIRACLE 3118N
MNE PUFF 21P

Exposed to SOUTHSIDE UNO 29A May 15 to October 31, 2015

LOT 37 JOHN DALIA 1B POLLED FEMALE
JOHN 1B(LE) NOT REGISTERED JAN 24, 2014

UFANO SC ROOSVELT
SIRE: **PFMC8095 JR UFANO CW MARTEL 707T** ROSIE
JR CW MARTEL POLL 406P CURTIS WALLACE 141H
MLC MISS MAPLE LEAF
CIRCLE CEE FORCE 40K JIL STRYKER 2G
DAM: **JOHN 32R (NOT REGISTERED)** HEATON'S DANICA 125D

Exposed to SOUTHSIDE UNO 29A May 15 to October 31, 2015

LOT 38 JOHN KALLI 16B POLLED FEMALE
 JOHN 16B (LE) PFC410731 FEB 23, 2014

	STUTHEITS SONNY 603S	ROLLIN ACRES RALLY 33M
		JES JANINE 41J
SIRE: PMC317908 PRO-CHAR MONGO 57U	SOS MAE 53L	HTA WHITEHOT 105A
		P-3 MS UNLTD POLL 8-109H
	SOS HEMI PLD 65N	LT WYOMING WIND 4020
DAM: PFC353583 JOHN SUNSHINE 16S		SOS DAISY MAE PLD 5L
	SOS FASTTRACK 117N CHARDEL TURBO 964J	
		MBK MS FAST TRACK 704G

Exposed to SOUTHSIDE UNO 29A May 15 to October 31, 2015

BRED HEIFERS



PRO-CHAR MONGO 57U (Reference Sire on Site)



Chomiak Charolais continues on its course to excellence with the purchase of a sire with a French twist. We purchased Mongo from Pro-char Charolais, owned and operated by David and Kristina Prokuda of Glenevis, Alberta.

Mongo is a solid smooth shouldered polled half French with excellent pants and lots of hair along with a large scrotal size. Besides those attributes that make Mongo a Chomiak Charolais herd sire, is the fact that Mongo contains the highly sought after TT for the Leptin gene. TT's increase the appetite of the animal while lowering how many calories it burns. And that means a higher rate of fat deposits or marbling in the meat. This Leptin gene as a trait is especially important for feedlot operators or anyone looking to fatten or finish their animals. The TT means a more efficient conversion factor to get the bovine into the food chain in less time. As Mongo has the TT, that means all his offspring will be born with at least one "T" allele.

Mongo has been working for us the past seven years and has sired some outstanding calves. Mongo is a proven sire.

Stored semen is available for sale.

<u>PRO-CHAR MONGO 57U</u>	<u>POLLED</u>
PROK 57U (LE)	JAN 26, 2008
PMC317908	

ROLLIN ACRES RALLY 33M
SIRE: FMC7970 STUTHEITS SONNY 603S
JES JANINE 41J

HTA WHITEHOT 105A
DAM: PFC303475 SOS MAE 53L
MS UNLTD POLL 8-109H

MAPLE LEAF POL MARTEL 201Z (MARTY) (Reference Sire on Site)



Marty was the high seller purchased in March 2013 at Maple Leaf Charolais sale. Marty is a full French three year old, carrying the Paladin genes. Marty is very quiet and has a beautiful curly hair coat and certainly an excellent set of pants. Marty was used on heifers in his first working season and for the past two seasons he was with cows. His bulky calves with pronounced butts are a trade mark of his.

<u>MAPLE LEAF POL MARTEL 201Z</u>	<u>POLLED</u>
MLR 201Z (RE)	PFMC8782 JAN 2, 2012

INCOGITO
SIRE: PFMC7224 MARTEL
GALANTE

MAPLE LEAF PALADIN 421P
DAM: PFFC14443 MAPLE LEAF MS PALADIN 850U
MLR MISS ECRIN 91K

Southside UNO 29A (Reference Sire on Site)



Chomiak Charolais purchased the 2 year old Full French polled Charolais top seller bull at the Vanderhoof, BC all breeds sale on april 11, 2015. Southside Charolais owner Ken Rose raised Uno, a third generation polled, thick, long big butted, muscular, along with lots of hair. The sire of Uno has lineage to the famous Full French Curtis Wallace bull, who reigned the country for many years. Uno's assignment this past breeding season was to breed the heifers. We are looking forward to the results with a lot of anticipation.

SOUTHSIDE UNO 29A		POLLED
KCS 29A (RE)	PFMC8858	MARCH 26, 2013

 UNO SC
SIRE: JR UNO CURTIS 929W
 JR MISS CW SUPER GAL 304N

 ANJOU PABLO 407P
DAM: FFC ANJOU UBELLE 841U
 ANJOU ROXANNE 562R

Reference Sires

<u>EATONS BEYOND VALUE 00209</u>	<u>POLLED</u>
JOHN 107X (RE) PMC338259	MAR 23/10
EATONS VALUE BEYOND 3004	
SIRE: M744705 VALUE ON VALUE 7117	
EATONS SIOUX 3934	
EATONS HERITAGE 2016	
DAM: F1048923 EATONS FAUSTI 6775	
EATONS FAUSTI 0784	

<u>JOHN SHOTGUN 49X</u>	<u>POLLED</u>
JOHN 49X (LE) PMC338986	FEB 16/10
RGP REAL ESTATE 129R	
SIRE: PMC316449 JOHN CANON 20T	
SDC MISS CORINA 24J	
LEN MR MAC 69M	
DAM: PFC354821 UBM MISS SOXY 4S	
UBM MISS LADY 29L	

<u>JR UFANO CW MARTEL 707T</u>	<u>POLLED</u>
JR 707T (LE) PFMC8095	JAN 26/07
ROOSVELT	
SIRE: UFANO SC (P)	
ROSIE	
CURTIS WALLACE 141H	
DAM: JR C.W. MARTEL POLL 406P (P)	
MLC MISS MAPLE LEAF 203M	
Stored semen is available for sale.	

<u>KCM TEREX 333N</u>	<u>POLLED</u>
KCM 333N (LE) PMC281468	FEB 2/03
SPARROWS ALLIANCE 513G	
SIRE: PMC256316 HFCC PLD EVOLUTION 5L	
HFCC ELVIRA 916J	
MY DE MAGNETIC 60Z	
DAM: SFC185116 EVC MISS ANASTASIA 92B	
EVC MISS UNIVERSE 86X	
Stored semen is available for sale.	

<u>HTA CROWN PRINCE 152 L</u>	<u>POLLED</u>
HTA 152L PMC258535	JAN 27/01
EC BRONSON 204 POLLED	
SIRE: ERIXON'S 1ST CHOICE 209H	
ERIXON'S 35D	
HTA WHITEHOT 105A	
DAM: HTA HOT STUFF 803 H	
HTA HOT STUFF 609F	
Stored semen is available for sale	

<u>STAUFFERS HAZZARD 59R</u>	<u>POLLED</u>
SLL 59R (LE) PMC300577	JAN 30/05
SPARROWS ALLIANCE 513G	
SIRE: PMC257827 SPARROWS COSSACK 11L	
HVR DANA 11D	
KC STOLICHNAYA H016 ET	
DAM: PFC292717 SFL 016 MISS GRACE 1K	
SFL 7B MISS GRACELAND 17G	

<u>EATONS GAUGE 9011</u>	<u>SCURRED</u>
JOHN 911W (RE) SMC332420	FEB 28/09
EATONS MEASURE 2183	
SIRE: M706995 EATONS GAUGE 5283	
EATONS FERN 9863	
EATONS PATRIOT 4031	
DAM: F1072311 EATONS CHICO 7596	
EATONS CHICO 5640	

<u>JOHN MELVIN 62Z</u>	<u>POLLED</u>
JOHN 62Z (LE) PFMC8745	MAY 12/12
UFANO SC	
SIRE: PFMC8095 JR UFANO CW MARTEL 707T	
JRC.W. MARTEL POLL 406P	
PCFL SOLITAIRE 55N	
DAM: FFC13942 MBZF ZOEY 6T	
MBZF FAYE 4L	

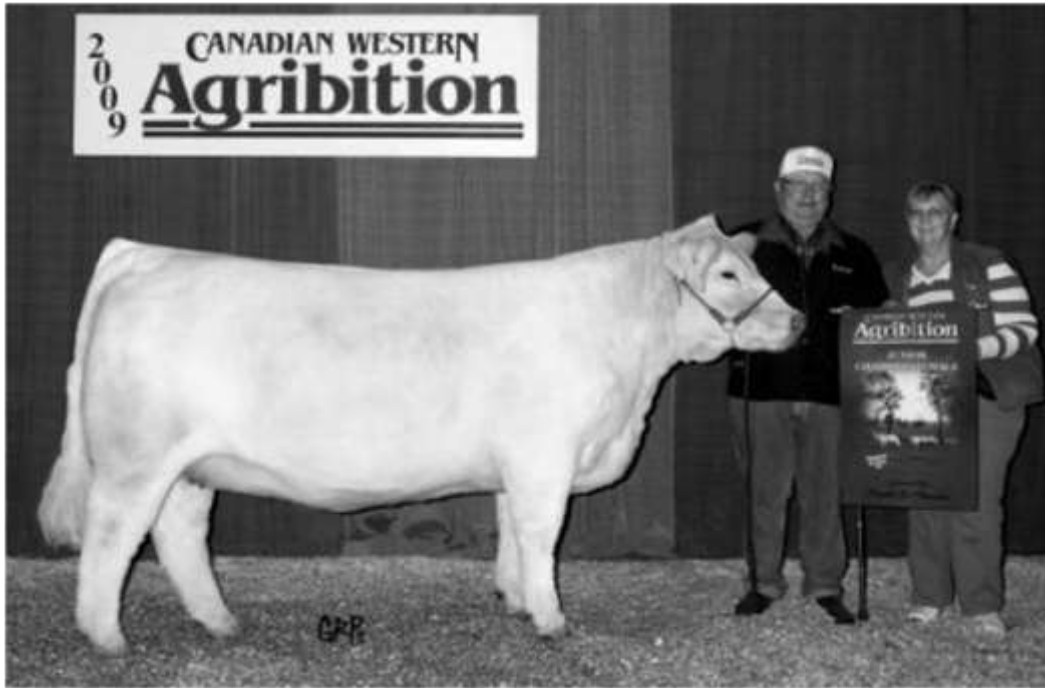
SEMEN AVAILALE AT ALTA GENETICS INC

- PCC SUDDEN IMPACT 848U (28CHO795) — 50 DOSES
- KCM TEREX 333N (114CHO526) — 284 DOSES
- WAT-CHA N'TH DEGREE 50N (114CHO5420) — 2 DOSES
- HTA CROWN PRINCE 152L (28CHO653) — 45 DOSES
- JR UFANO CW MARTEL 707T (28CHO767) — 160 DOSES
- SVY KABOOM PLD 7113T (28CHO771) — 5 DOSES
- PRO-CHAR MONGO 57U (28CHO785) — 93 DOSES
- WESC HICKS REVOLVER 14R (80CHO063) — 10 DOSES

Some Awards won by Chomiak Charolais Stock



Simply Irresistible 813U - Grand Champion Female—Agribition and Farm Fair 2009



Thank You

We wish to thank all of our buyers, past, present and future for your ongoing support.

We also wish to thank everyone for attending our sale today.



Terms & Conditions

Terms... Terms are cash sale day, unless prior arrangements have been made.

Bidding... Each animal will sell to the highest bidder.

Disputes... Bidding will be reopened between the parties involved in dispute. If no further bidding is made, the buyer will be the person from whom the auctioneer accepted the last bid. The auctioneer's decision on all disputes will be final.

Announcements... All announcements made from the auction block will take precedence over the printed matter in the catalogue.

Breeding Guarantee... All bulls sell under the standard terms and conditions set out by the Canadian Charolais Association. All bulls are semen tested and vet inspected, and all females have been pregnancy checked by Rick Faintuck, Stockyards Veterinary Services.

Insurance... will be available on sale day

Registration Papers... Each purebred animal will carry papers issued by the Canadian Charolais Association. A certificate of registry duly transferred will be furnished to the buyer for each animal after payment has been made.

Purchaser's Risk... Each animal becomes the risk of purchaser as soon as sold.

Note... Chomiak Charolais cannot house bulls which have been sold this year.

Bull Warranty

We guarantee to provide you with a sound, fertile bull capable of servicing a reasonable number of cows. In the event that your bull is a non-satisfactory breeder the seller will not under any circumstances, be responsible for more than the original selling price of any bull sold in the sale. The consignors will not provide replacement or credit for physical injury or mismanagement. Therefore we stress the importance of insurance on your bull.

Vaccination History

Bulls received Vista Once and Vision 8/S in the spring of 2014

Bulls received Vista Once ,Vision 8/S and Ivermectin in the fall of 2014

Bulls received Ultra Choice 7, Bovoshield Gold 5 in June of 2015

Bulls were treated with Ivermectin in June of 2015 and again on January 18, 2016



Bred heifers on pasture

NOTES



Speckle Park sired by Marty



Stella's Christening





CHOMIAK CHAROLAIS

John & Cathie Chomiak

163016 Twp Rd 520

R. R. 1, Mundare, Alberta T0B 3H0

Phone: (780) 632-7108 Cell: (780) 945-1504

Fax: (780) 603-0839

Email: johnwchomiak@gmail.com